



NYMBUS FC

I. Description

- Invisible element of fire control system
- System for fire restriction, control and evacuation
- Perfect combination between Architecture and building Fire Protection

1.1. Integrity in

- All types of constructions

1.2. Function

- Limits and control the fire

1.3. Correspondence

NYMBUS FC DYN is in accordance with the following Directives and Standards.

General standards	
1	UNE EN 13501-2:2004
2	UNE EN 1634-1:2000
3	EN ISO 13934-1

II. Nymbus FC DYN

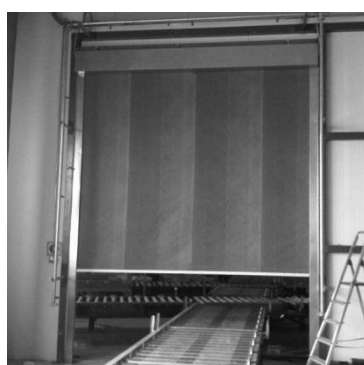
The system is composed by: fiberglass fabric with polyurethane or silicone coating on both sides seamed with steel wire and fixed to a steel roller; galvanized neat boxes, sidebars and tabular 24V motor.

2.1. Description

- System for under roof installation based on galvanized steel elements
- System from overlapping elements

2.2. Sizes

Will be specified on demand

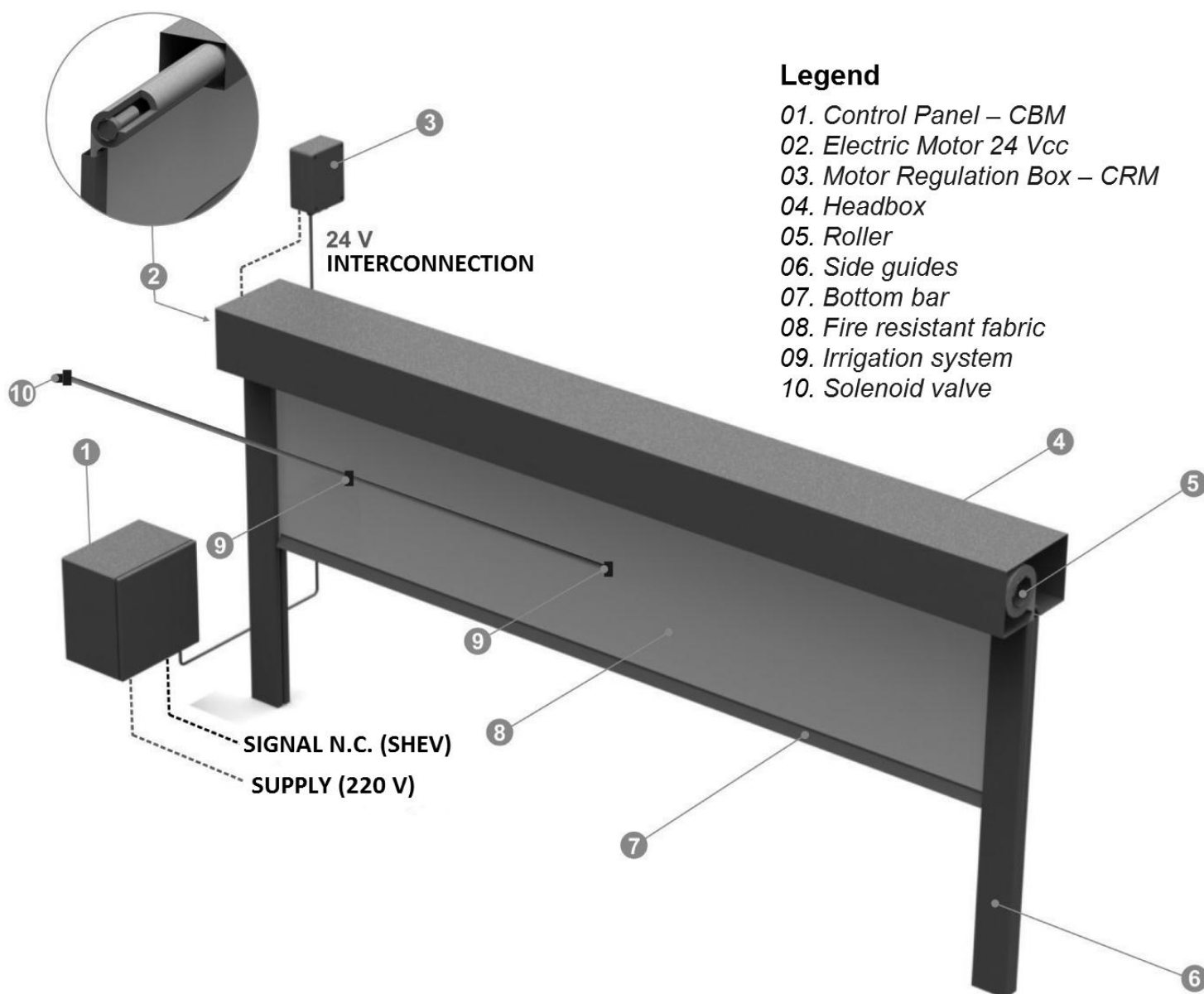




2.3. Operating system

The system can be activated by:

- SHEV
- Fire alarm
- Internal fire and smoke detection devices





III. System advantages

- System tested and approved according to European standards UNE EN 1634-1
- 120 minutes of fire resistance, with a classification of EI120
- Allows large open areas without the limitation of subdivisions
- Architectural versatility

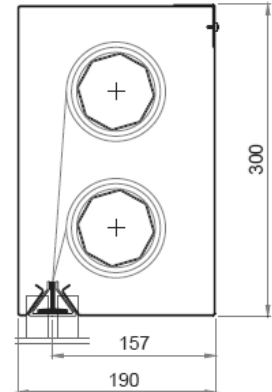
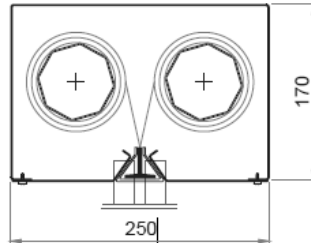
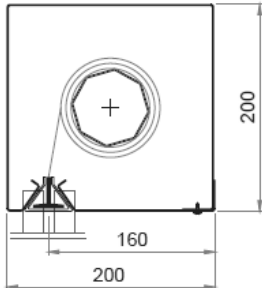
IV. Technical characteristics

Fabric	Fiberglass fabric resistant to 1000°C Thickness: 1.6mm
Headbox	Galvanized steel 1.5 mm thick
Side guides	Galvanized steel Thickness: 4 mm Dimensions: 100 x 50 mm
Roller	Galvanized steel roller Thickness: 1,2 mm Diameter: 70 mm
Bottom bar	Steel bar
Trim	Triangular aluminum profile, white, 1,8 mm thick
Electric Motor	Operating Voltage: 24 V Maximum power: 24 W Consumption: 3 A
CBM Control Box	Receives the signal alarm from the Smoke Control and Fire Management System and controls the movement of curtains Dimensions: 400mm x 300mm x 210mm Maximum capacity: up to 12 motors
Down and up speed	Between 0,06 and 0,15 m/s
Optional Extras	White fabric Painting in any RAL Protection and obstruction warning system

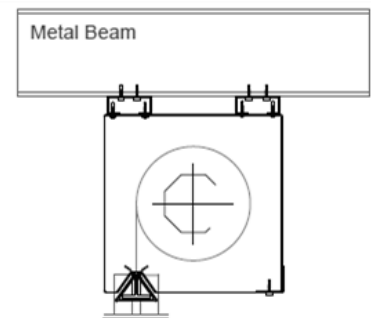
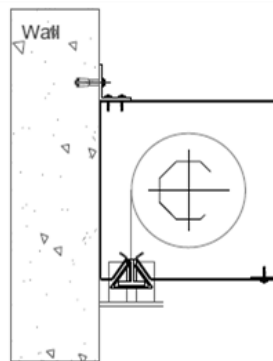
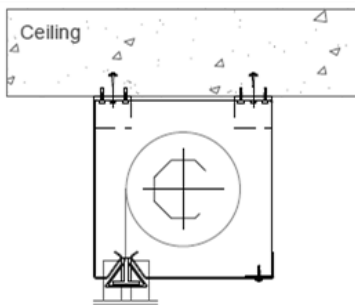


V. Installation details

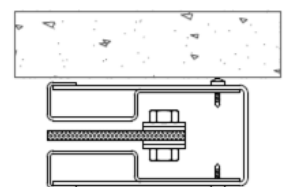
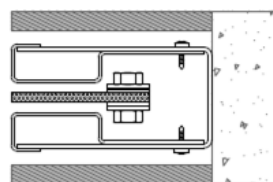
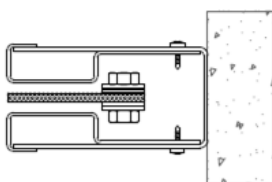
5.1. Standard headbox sizes



5.2. Headbox installation



5.3. Side guides installation



Note: For more information, please contact your consultant.