



## Glos Rex



### I. Description

Solution for automatic release of excess internal pressure.

#### 1.1.Integrity in

- All types of roof packages and constructions.



### 1.2. Function

- Controlled ventilation in case of accidental excess internal pressure.

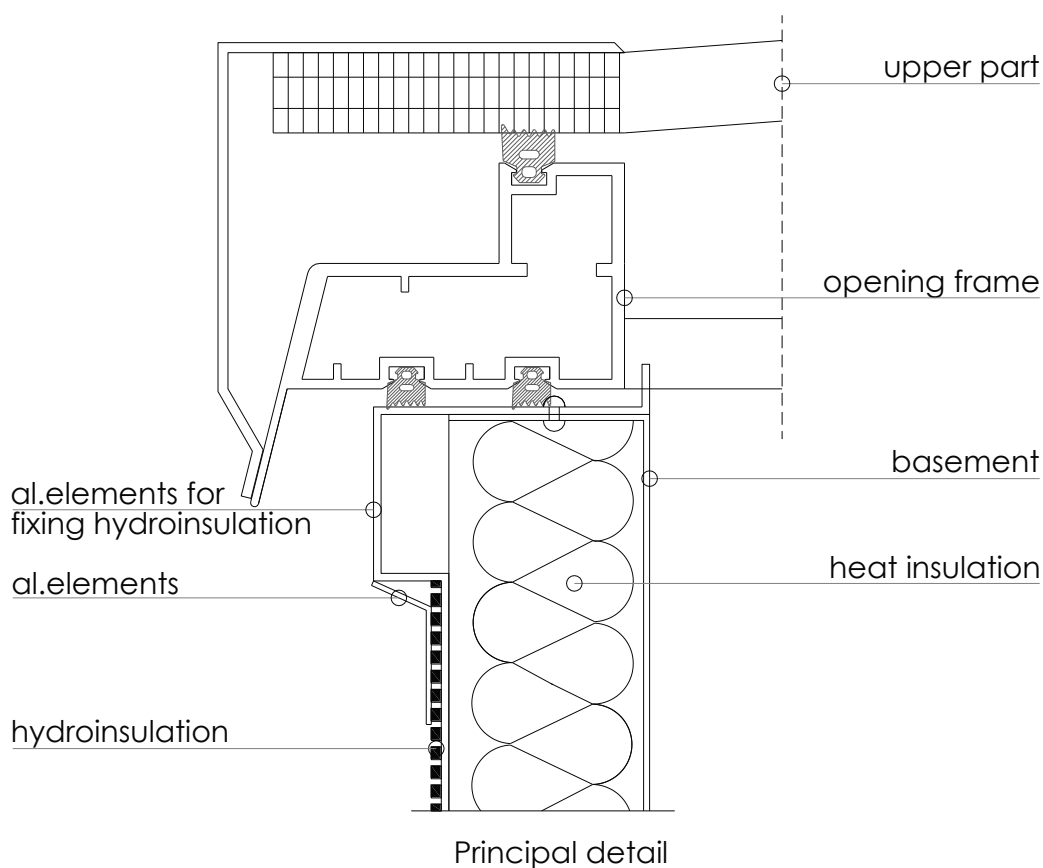
### 1.3. Correspondence

- Glos Rex is in accordance with the following Directives and Standards:

General standards		
1	ISO 9001:2008	
Additional test and approvals		
2	EN 1873	2005-J1200 Fires-MP-025-12AUNE
3	EN 1026	2003 – SP – Pr.76
4	EN 10 077 – 1,2	SP – Pr.26

## II. Components

### Application 1





## 2.1. Basement

No	Type of materials	Thickness	Height	Coefficient of thermal transmission
1	Galvanized steel	1,2 mm	150 mm	50mm mineral wool $U_g=0,9W/m^2.K$
2	Stainless steel	1,5 mm	300 mm	100mm mineral wool $U_g=0,5W/m^2.K$
3	Al/Mg alloy	2,0 mm	450 mm	

## 2.2.Types upper parts

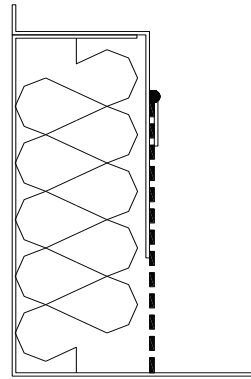
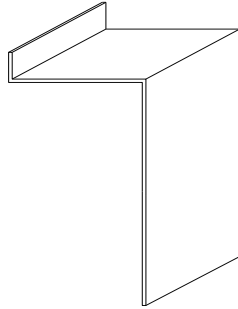
No	Types	View	Lt (%)	G value (%)	U value (W/m <sup>2</sup> .K)	Si (db)
1	PC 10mm		61	61	2,5	17
2	PC 16mm		54	55	2	18
3	PC 20mm		47	47	1,67	20
4	DK 40÷80mm		0	0	1,2-0,65	24



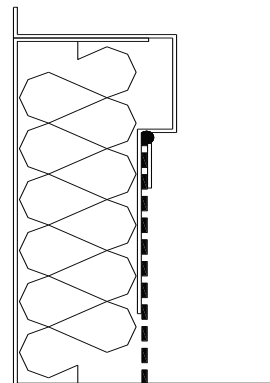
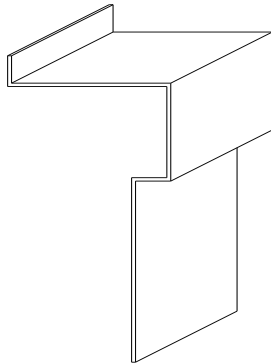
## 2.3. Joining elements

### 2.3.1. Hydro insulation fixing

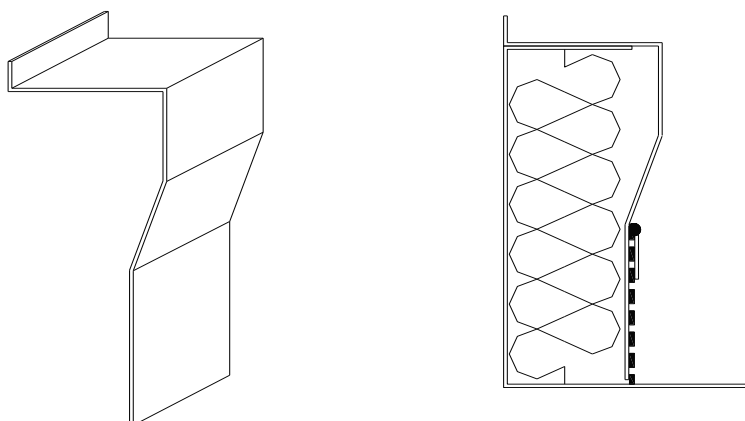
- **Type 1** – Fitting for PVC / TPO / bitumen / EPDM / other hydroinsulation



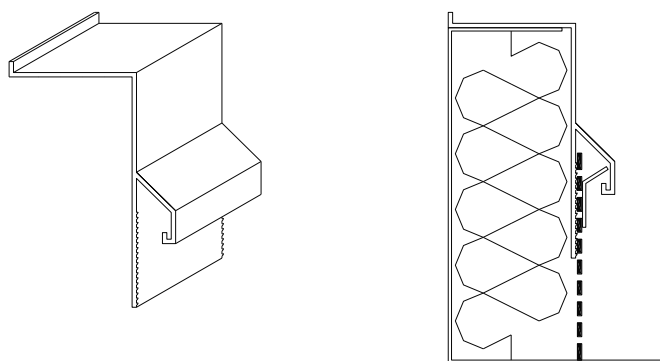
- **Type 2** – Fitting with PVC hydroinsulation



- **Type 3** – Fitting with PVC hydroinsulation



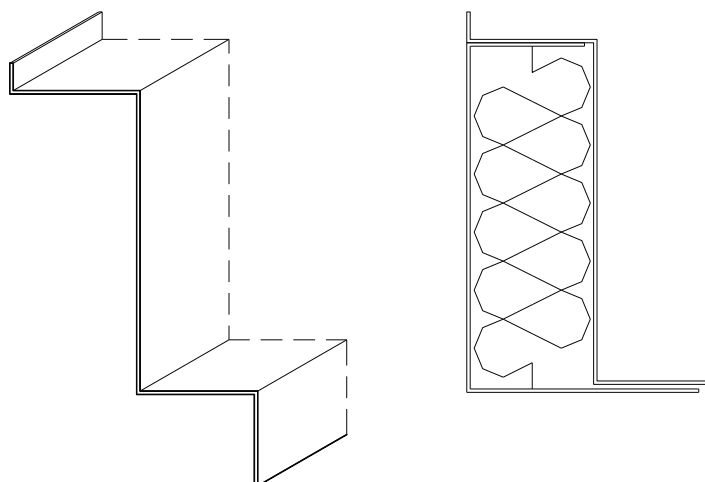
- **Type 4** – Fitting with PVC hydroinsulation



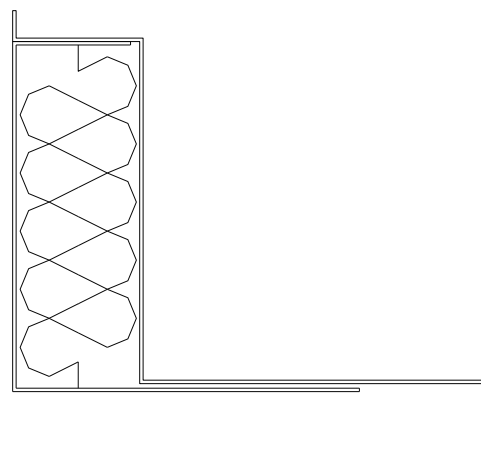
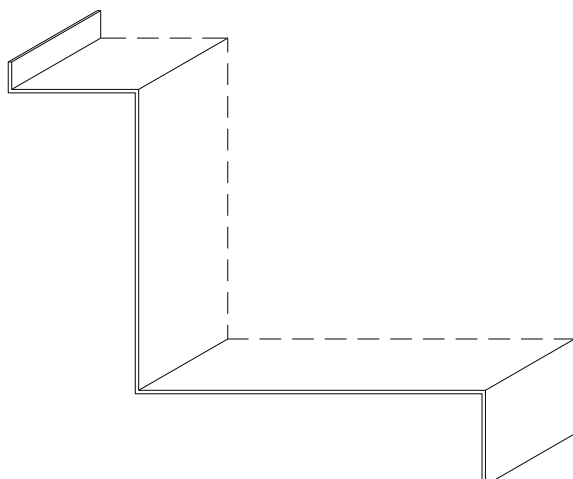
Note: Option for joining elements: powder coated, visible part(RAL).

### 2.3.2. Aluminium case

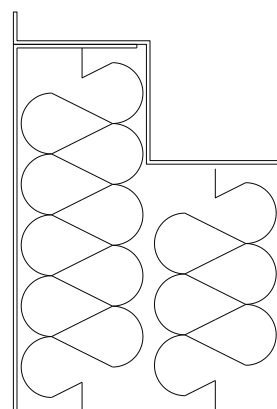
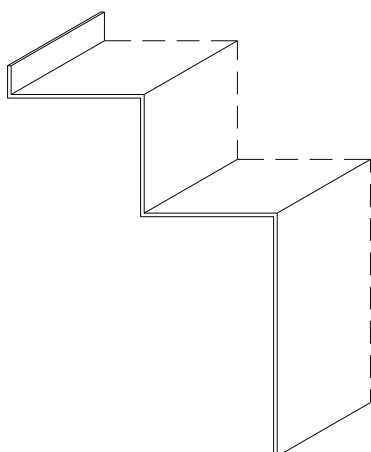
- **Type 1** – For installation on reinforced board



- **Type 2** – For installation on sandwich panel



- **Type3** – Thermal insulation forced



### III. Components

#### 3.1. Locking device

Locking device is proved for safety work with optimal locking force. That is a guarantee that the ventilator will be in safety mode in case of strong negative wind force and will open the damper in correct moment for controlled ventilation in accidental moment.

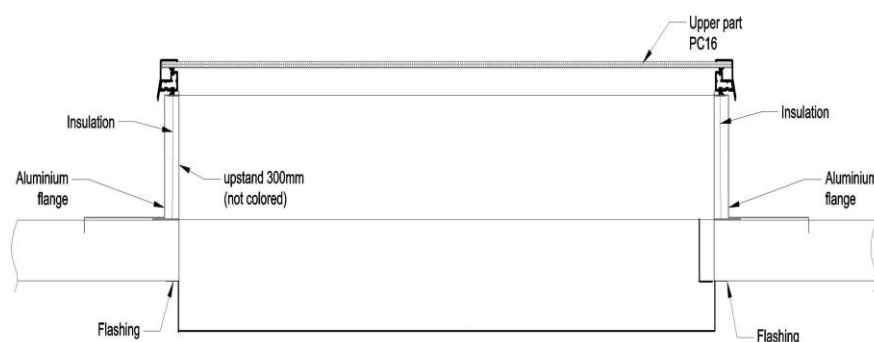
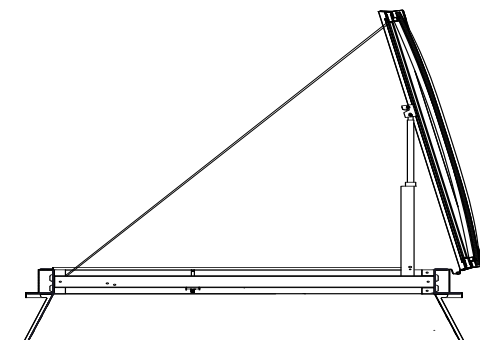
The flap released at a pressure of 1 200 N/m<sup>2</sup>.

#### 3.2. Arresting rope or gas spring

Using of arresting ropes or gas spring is optional.



The use of arresting stainless ropes or gas spring is a guaranty for safety work and avoiding the damages in case of activation.



### 3.3.Dimensions:

100 x 200 cm

110 x 200 cm

120 x 200 cm

130 x 200 cm

140 x 200 cm

150 x 200 cm



160 x 200 cm

#### IV. Technical parameters for Glos Rex

- Resistance to collapse

<b>J 1200</b> impact of large and small body	<b>EN 1873</b> 2005 - FIRES-MP-024-12 AUNE
---	---

- Air permeability

<b>Class 2</b>	<b>EN ISO12 207</b> Air permeability
----------------	---

- Coefficient of thermal transmission of entire unit

<b>U value [W/m<sup>2</sup>.K]</b>	<b>1,39</b>
------------------------------------	-------------

**Note: For more information, please contact your consultant.**